

## PERFORMANCE

### Processor

Intel® Core™ i7-10610U (4C / 8T, 1.8 / 4.9GHz, 8MB)

### Graphics

NVIDIA® Quadro® P520 2GB GDDR5

### Chipset

Intel SoC Platform

### Memory

16GB Soldered DDR4-2666 non-ECC

### Memory Slots

One memory soldered to systemboard, one DDR4 SO-DIMM slot, dual-channel capable

### Max Memory

Up to 48GB (16GB soldered + 32GB SO-DIMM)

### Storage

1TB SSD M.2 2280 PCIe NVMe Opal2

### Storage Support

One drive, up to 2TB M.2 2280 SSD

### Card Reader

MicroSD Reader

### Optical

None

### Audio Chip

High Definition (HD) Audio, Realtek® ALC3287 codec

### Speakers

Stereo speakers, 2W x2, Dolby® Audio™

### Camera

720p + IR with ThinkShutter

### Microphone

2x, Array

### Battery

Integrated 57Wh

### Max Battery Life

MobileMark® 2014: 16.5 hr  
MobileMark 2018: 10.48 hr  
JEITA 2.0: 16.5 hr

### Power Adapter

65W USB-C 3-pin

## DESIGN

### Display

15.6" FHD (1920x1080) IPS 250nits Anti-glare, 45% Gamut

### Touchscreen

None

### Color Calibrator

None

### Keyboard

Backlit, English (EU)

### Case Color

Black

### Case Material

PPS / 50% GF (Top), PA / 50% GF (Bottom)

### Dimensions (WxDxH)

365.8 x 248 x 19.1 mm (14.40 x 9.76 x 0.75 inches)

### Weight

1.75 kg (3.86 lbs)

## SOFTWARE

### Operating System

Windows® 10 Pro 64, Romanian / English

### Bundled Software

None

## CONNECTIVITY

### Ethernet

100/1000M

### WLAN + Bluetooth™

Intel AX201 11ax, 2x2 + BT5.1

### WWAN

Fibocom L850-GL

### SIM Card

None

### NFC

None

### Standard Ports

- 1x side docking connector
- 2x USB 3.2 Gen 1 (one Always On)
- 1x Security keyhole
- 1x Ethernet (RJ-45)
- 1x USB-C 3.2 Gen 2 / Thunderbolt™ 3 (support data transfer, Power Delivery and DisplayPort™)
- 1x USB-C 3.2 Gen 1 (support data transfer, Power Delivery and DisplayPort)
- 1x HDMI® 1.4b
- 1x headphone / microphone combo jack (3.5mm)
- 1x microSD card reader

### Optional Ports (configured)

- 1x Smart card reader
- 1x Nano-SIM card slot (WWAN models)

### Monitor Cable

None

## SECURITY & PRIVACY

### Smart Card Reader

Smart Card Reader

### Security Chip

Discrete TPM 2.0

### Fingerprint Reader

Touch Style, Match-on-Chip

### Physical Locks

Kensington® Security Slot

### Other Security

- IR camera for Windows® Hello
- ThinkShutter camera cover

## MANAGEABILITY

### System Management

Intel® vPro, DASH

## SERVICE

### Base Warranty

3-year, Depot

### Included Upgrade

3Y Premier TP WS WHB (CPN) (5WS1B09494)

## ACCESSORIES

### Bundled Accessories

None

## CERTIFICATIONS

### Green Certifications

- ENERGY STAR® 8.0
- EPEAT™ Gold
- RoHS compliant

### Mil-Spec Test

MIL-STD-810G military test passed

### ISV Certifications

Please visit [www.thinkworkstations.com/isv-certifications/](http://www.thinkworkstations.com/isv-certifications/)

## MODEL

TopSeller : Yes

Announce Date : 2020-08-11

EAN / UPC / JAN : 0195348003803

End of Support : 2026-12-05

## Premier Support - A direct 24x7x365 line to our most elite technicians.



Advanced technical support, 24x7x365, in more than 100 markets



Technical Account Managers for proactive relationship and escalation management



Comprehensive hardware & OEM software support



Priority on service delivery and repair parts



Single point of contact for simplified end-to-end case management



Lenovo Service Connect Portal for customized reporting and product support

## Accidental Damage Protection - Protection of your PC from the unexpected.

Experience shows that a significant portion of devices may be damaged (and not covered under warranty) in the first three years. Lenovo's Accidental Damage Protection service covers accidents beyond the system warranty such as drops, spills, bumps and even electrical surges. Make sure your new device has maximum protection, avoid unplanned costs and get peace of mind.

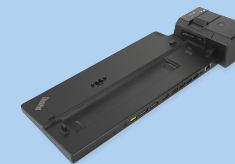
## Base Warranty - Included with the systems you purchase, default 1- or 3-year coverage window.

## Warranty Extensions & Upgrades - Service and protection that's right for your circumstances.

- Pick Up & Return Courier
- Onsite Support
- Technician Installed Customer
- Replaceable Unit Service
- International Warranty Upgrade

Lenovo may not offer the products, services or features discussed in this document in all regions. Lenovo may withdraw an offering at any time. Information is subject to change without notice. Consult your local representative for information on offerings available in your area. Lenovo reserves the right to change specifications or other product information without notice. Lenovo is not responsible for photographic or typographical errors. Lenovo provides this publication "as is" without warranty of any kind, either express or implied, including the implied warranties of merchantability or fitness for a particular purpose.

## Recommended Accessories



### ThinkPad Ultra Docking Station (American Standard Plug)

40AJ0135US

The ThinkPad Ultra Docking Station provides the best docking experience for large enterprise ThinkPad customers. The innovative side connector, designed exclusively for ThinkPad notebooks, provides a driver-free way t...



### ThinkPad Thunderbolt 3 Workstation Dock Gen 2

40ANY230US

Lenovo understands that modern business depends on a wide variety of notebooks and devices from different brands working seamlessly together to meet business needs. To deliver this experience, ThinkPad Thunderbolt 3 W...

For a full list of accessories and services, please visit:  
<https://smartfind.Lenovo.com>

**Lenovo**

**PSREF**  
Product Specifications  
Reference